



GET TO KNOW ME! (Monster Partner)



PREPARATION

- A Download and print copies of the “Get to Know Me!” worksheet for each student in your class.
- B Provide students with pencils, markers or crayons.

ACTIVITY



- 1 Start the activity by reflecting with your class.
 - How well do you know one another? (Call on 2-3 students to share).
 - What type(s) of skills do you think we need to use when learning about another person?
 - Listening
 - Making connections to self
- 2 Discuss the activity.
 - We are going to complete a short survey - don't tell anyone your answers! You'll have 5 minutes to complete the survey.
 - Once done, you will partner up with someone else in the class, and each of you will guess what the other wrote for your answers!
- 3 Let's get started!
 - Have students complete activity.
 - Optional: Once done, they can draw a monster for their partner based on the different things they learned about them (example if their partner likes to play video games, they can draw a monster with video games, etc)
- 4 Possible group discussion questions;
 - What did you learn about your partner that you didn't already know?
 - What connections to your own life did you make with your partner/ what do you have in common?

GET TO KNOW ME!

DIRECTIONS

Fill out the answers to the survey. Once done, you will work with another person in your class. How well do you think you know them? Write the answers down for your partner. Once done, check in with your partner to see how many of the answers you've got correct!

QUESTIONS / MY ANSWERS

Do you like sports? Yes/No Why?

Do you like sweet or salty food? Why?

Do you like to read or play videogames? Why?

What do you like to do for fun? Why?

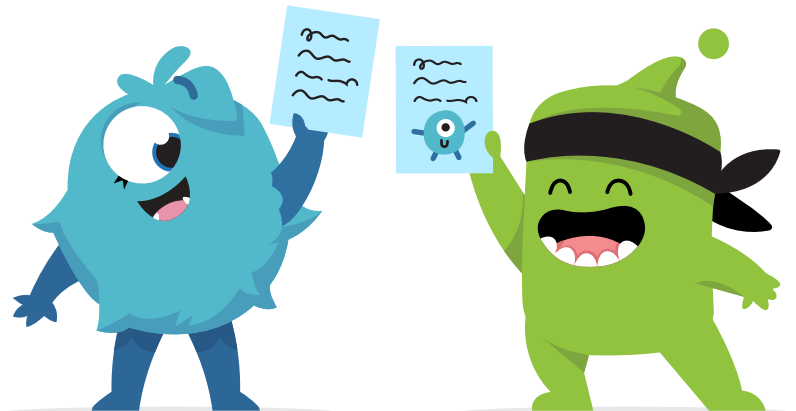
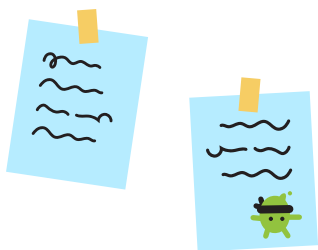
What is your favorite season? Why?

What is your favorite color? Why?

What is your favorite animal? Why?

Do you have a pet? Yes/No What animal is it?

What kind of music do you like? Why?



My name:

Partner's name

GET TO KNOW ME!

DIRECTIONS

Fill out the answers to the survey. Once done, you will work with another person in your class. How well do you think you know them? Write the answers down for your partner. Once done, check in with your partner to see how many of the answers you've got correct!

QUESTIONS / MY PARTNER

- What do you think is your partner's favorite sport? _____ Why? _____
 _____ Were you correct? Yes / No
- Do you think your partner likes sweet or salty food? _____ Why? _____
 _____ Were you correct? Yes / No
- Do you think your partner likes to read or play video games? _____ Why? _____
 _____ Were you correct? Yes / No
- What do you think your partner likes to do for fun? _____ Why? _____
 _____ Were you correct? Yes / No
- What do you think is your partner's favorite season? _____ Why? _____
 _____ Were you correct? Yes / No
- What do you think is your partner's favorite color? _____ Why? _____
 _____ Were you correct? Yes / No
- What is your partner's favorite animal? _____ Why? _____
 _____ Were you correct? Yes / No
- Does your partner have a pet? What is it? _____ Why? _____
 _____ Were you correct? Yes / No
- What kind of music does your partner like? _____ Why? _____
 _____ Were you correct? Yes / No

DRAW A MONSTER FOR YOUR FRIEND:



My name: _____

Partner's name _____

GET TO KNOW ME!

DIRECTIONS

Fill out the answers to the survey. Once done, you will work with another person in your class. How well do you think you know them? Write the answers down for your partner. Once done, check in with your partner to see how many of the answers you've got correct!

QUESTIONS / MY ANSWERS

Do you like sports? Yes/No Why?

Do you like sweet or salty food? Why?

Do you like to read or play videogames? Why?

What do you like to do for fun? Why?

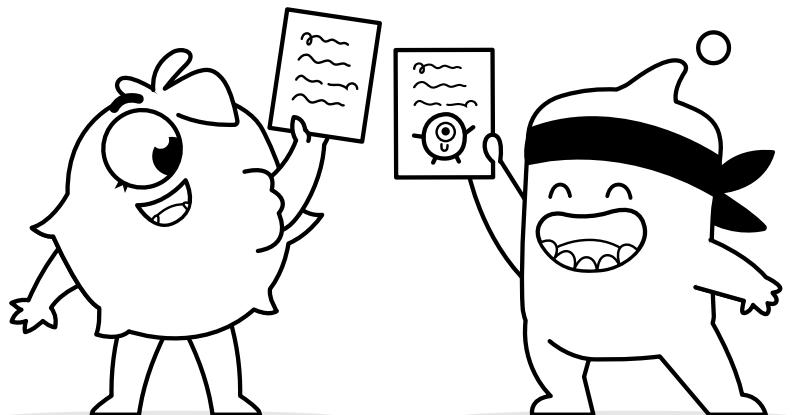
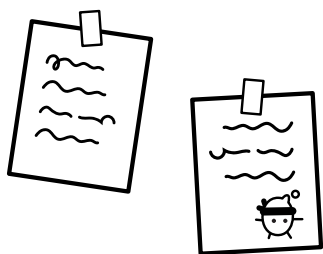
What is your favorite season? Why?

What is your favorite color? Why?

What is your favorite animal? Why?

Do you have a pet? Yes/No What animal is it?

What kind of music do you like? Why?



My name:

Partner's name

GET TO KNOW ME!

DIRECTIONS

Fill out the answers to the survey. Once done, you will work with another person in your class. How well do you think you know them? Write the answers down for your partner. Once done, check in with your partner to see how many of the answers you've got correct!

QUESTIONS / MY PARTNER

- What do you think is your partner's favorite sport? _____ Why? _____
 _____ Were you correct? Yes / No
- Do you think your partner likes sweet or salty food? _____ Why? _____
 _____ Were you correct? Yes / No
- Do you think your partner likes to read or play video games? _____ Why? _____
 _____ Were you correct? Yes / No
- What do you think your partner likes to do for fun? _____ Why? _____
 _____ Were you correct? Yes / No
- What do you think is your partner's favorite season? _____ Why? _____
 _____ Were you correct? Yes / No
- What do you think is your partner's favorite color? _____ Why? _____
 _____ Were you correct? Yes / No
- What is your partner's favorite animal? _____ Why? _____
 _____ Were you correct? Yes / No
- Does your partner have a pet? What is it? _____ Why? _____
 _____ Were you correct? Yes / No
- What kind of music does your partner like? _____ Why? _____
 _____ Were you correct? Yes / No

DRAW A MONSTER FOR YOUR FRIEND:



My name: _____

Partner's name _____